

## CAN adapter installation guide

CAN\_adapter\_v1.0 is compatible with the controllers:

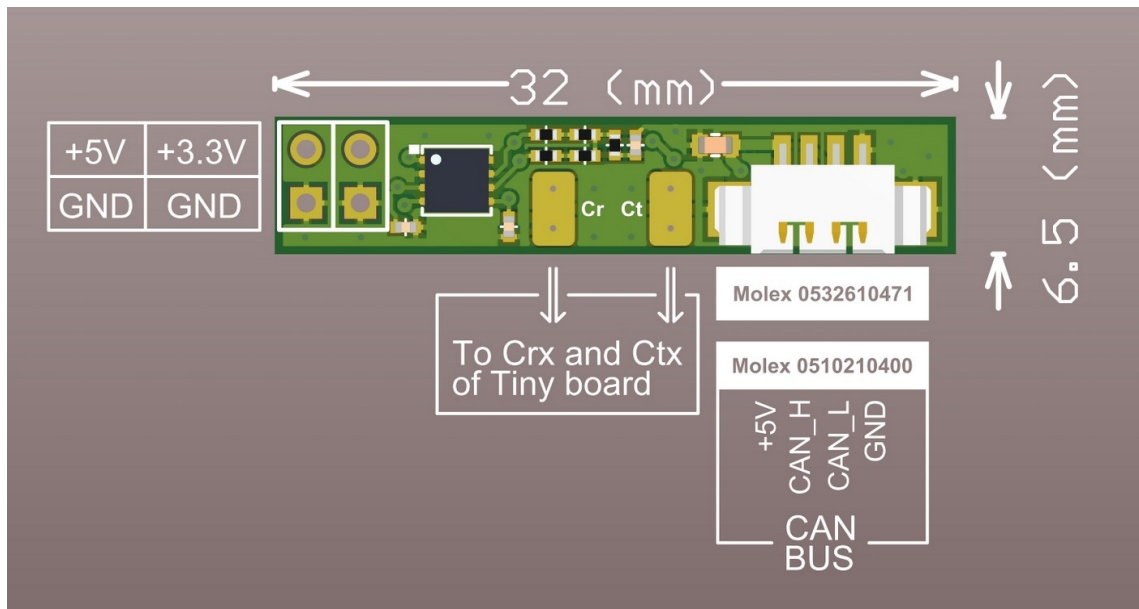
- SBGC32 Tiny rev. D v.2.5
- SBGC32 Tiny GD32 v.1.0

It requires firmware “Tiny+ Extended” 2.72b0 or higher. For a regular “Tiny+ Rev.D” it’s available via license upgrade; please contact us for details.

CAN adapter is compatible with the following CAN modules:

- CAN\_IMU module - any revisions, FW v.1.46 or higher.
- CAN\_Drv module - any revisions
- GPS\_IMU v.1.2 and V.1.3 - FW v.2.05 or higher.
- GPS\_IMU Split ‘Sensor’ and ‘Receiver’
- BaseCam Serial Hub

## Dimensions and pinout



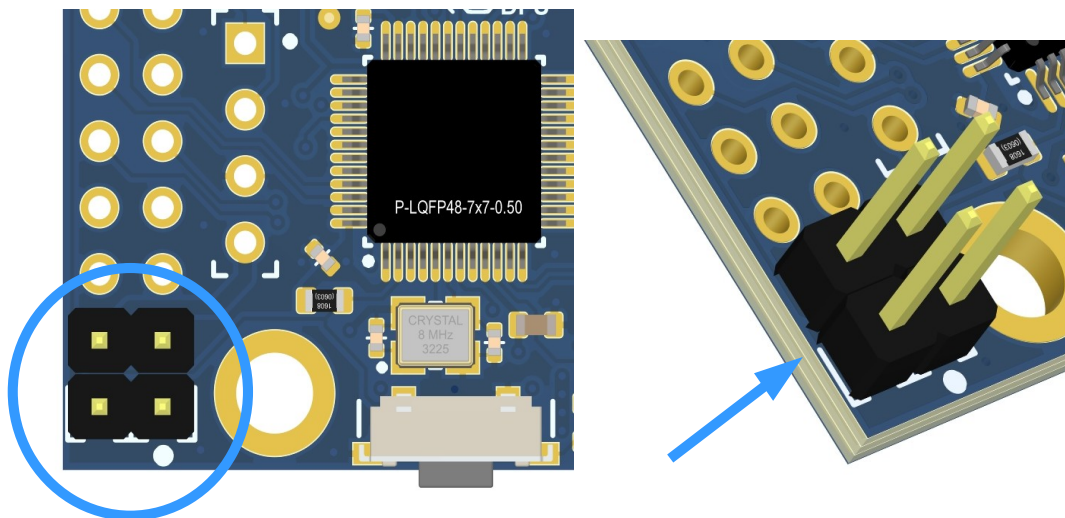
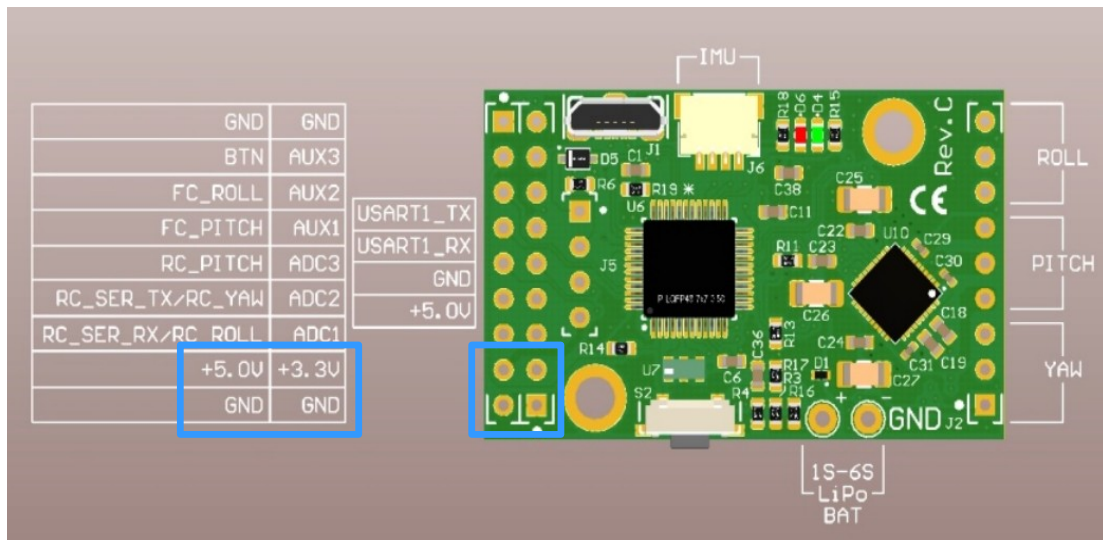
**Note.** CAN adapter requires 3.3V and 5V supply. Connect the adapter contacts to the corresponding contacts of the main controller. Stable operation of the adapter with 3.3V and 5V supply from other sources is not guaranteed!

## Assembly and configuration sequence

### 1) Preparing of Tiny controller

The usual installation method is to install it on top of Tiny controller.

- Install and solder male 2.54 header (2x2) contacts for the +3.3V, +5V, and GND pins of the "Tiny" controller.



### 2) Installation on the controller board

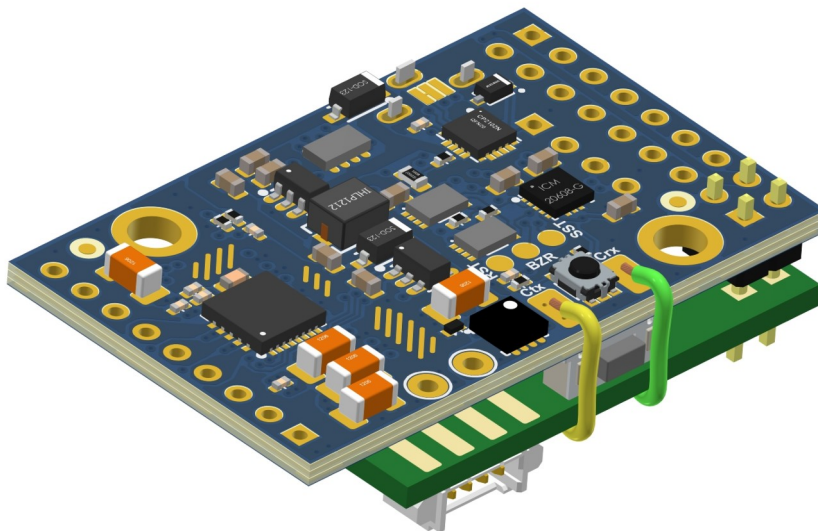
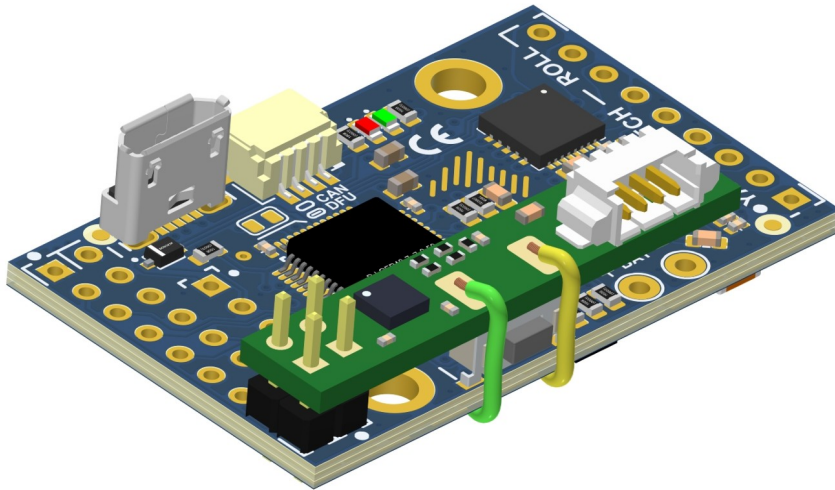
- Put CAN adapter on the top of Tiny board, thread male header contacts through contact holes in the adapter board. Solder male header contacts on top side of the adapter board.
- Make two jumpers from flexible insulated wire a total length of 15-16mm each. Remove 2.5-3mm of insulation from each end of both jumpers.
- Solder jumpers to the CAN adapter board and Tiny controller by connecting according to

the following diagram:

CAN adapter Cr pad → Tiny board Crx pad

CAN adapter Ct pad → Tiny board Ctx pad

Example of two connected devices are illustrated below.



### 3) CAN adapter settings in the GUI

There are no special settings required. With the proper firmware loaded to the main controller, it should appear extra groups in the GUI with parameters for all supported CAN modules.